

Synapse

College of Nursing and Health Professions

Service Learning

Classroom knowledge
comes to life with
hands-on community
engagement

Letter from the Dean

J , d d a a a a a m a
a a, a d a a d
a a , a a d a a a
, a a d a a m d a d a d a
a a d a a d d d m a

, a d a ' m m m m
a m a a m a d -

Nadine A. Couderc

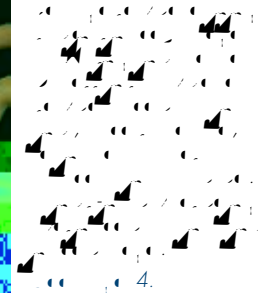
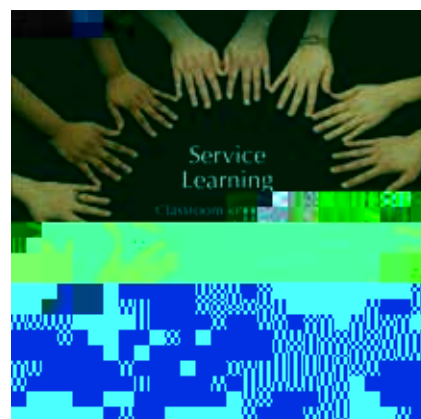
ad d
a,
a d a

Synapse

College of Nursing and Health Professions

FEATURES

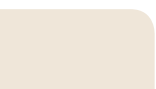
Nursing: more than 20 years of excellence First doctoral candidates approach graduation	2
Service learning Transforming college and community	4
Exchange program builds young Iraqi leaders Studying community health and social services	10
Gifts	12
Around the college	14
Alumni news	20



College of Nursing and
Health Professions
Dean
Associate Dean
Assistant Dean
Student Activities Coordinator
Government and University
Relations
Vice President
Assistant Vice President for
Marketing and Communications
Director of News and Information
Services
Director of Alumni and
Volunteer Services
Director of Development
Senior Editor
Art Director
Photography
Address
www.usi.edu
health.usi.edu



a d a

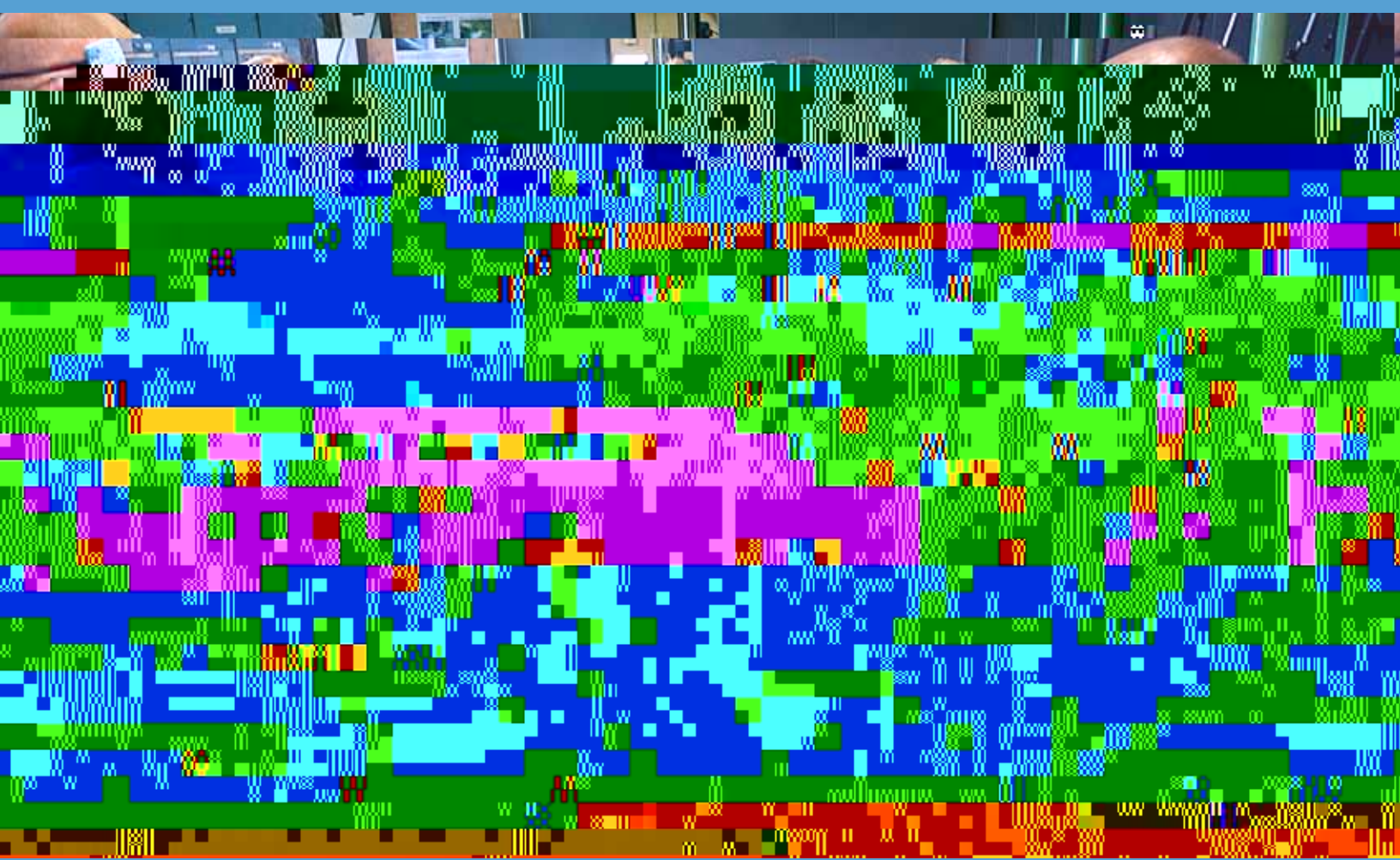


a a
USI nursing facts

-

Service learning

Transforming students and community



A a m a ad, ad, a m, a a , a d ma,
d a d a a
a a a d a mm m a ,
d a a m a d d a a , d
am a a a a m a a mm a , d
a a d d a m a m a d

a a - a
a d mm a
a d m a a a
a a a a d a a a
a m a mm
a d
a a
a d mm
ad d da
a d a ad a
d mm
m a d a a
d d a
a- d ad da
m a a

mm a a ad
a a a a d a
am a ad a
d a a m
a d mm a
d adm a
a da a a a
a ad a a d
d m d
a a d a d d
a a ad a d d a
a d a a ma
a a m a a ad m
a m ad m a
a d

dda a d
d ad a a
a ad
d a a a d d
d m a d a mm
a d a am
a a
a d m
a d a
d a m m
a d m a a
ma mm

Dental clinic for medically underserved builds students' skills

d a a am m a d
a a d d
a a\$, a m
da a a a d a
ad a ()-()-

ma am a a a
ad d ma da a
a a d a d a d
ma a
d d a
m d a d d
a a a J a
a d (ad a
a d d ad a) a d a a
a d d a a
a d m a
a d m a d
a a a d
a a d a am
d d a a m am
d a a m da a



Alumna establishes first scholarship designated for sonography student

a m m a a a
 m d d m d
 a a a d a
 a a a d da
 m d a a
 a ad a d
 a a a am
 a a a a d d
 a a a a m

a a ma m am a
 ad a m a a d
 m a d m am
 a m m a d a d
 a d m d
 a a

d a d a d a a
 d da m d a a
 a d- a d
 d a a a d a

College remembers William H. Mitchell

am
 a d a d &
 m a (d



m a a
 ad a d m a d a d a
 a da a a a a
 da a a a a -
 a a da a
 a m a
 a a d a a a a d
 m m a a d
 am a d
 d am a ad a a
 d am
 a a a
 a a a a a
 a J a
 a a d a
 a a d a a
 a a d a a a d
 a am m a -

2010
 “

HONOR ROLL OF DONORS

2008-2009 CNHP DONORS	Daniel B. & Kristine A. Martyn	
NAME	James & Lynn G. '92 Maserejian	
Bruce H. & Carol A. Baker	Ralph A. & Margaret C. Matacale	
Mary C. Beckman '84	Jerome & Elizabeth A. '96 Moscoso	
James R. & Hyacinth B. Bickel	Frank A. & Aleene Papariella	
Ida Marie Block '82	A. Mark & M. Kathy Peed	
Ira Brandon & Lindsey N. Boudreau	Robert L. & Victoria K. '95 M'01 Pigott	
Steven J. '89 M'95 & Rosemary D. '95	Ann D. & Rachel T. '01 Polazzi	
Mark D. & Jennifer M. Brown	Wesley A. Roache '05 M'06	
Jerry & Marlena G. '93 M'00	Charles & Rowser '95 M'99	
Nadine A. Coudret	Charles W. & Mary H. M'00 Rutherford	
Wanda L. Douglas	George O. '88 & S. Beth M'07 Thompson	
Carol J. Dreith '07 M'08	Gina R. Topper '97	
Kevin J. Valadares & Mary Catherine E. '07	Catherine E. '07 Tanner	
Mark A. '01 & Karalyn J. '01	Keith A. & Diane G. Utey	
Edward F. & June Frederking	Michael W. '75 & Zadie E. '78 Whipple	
Lisa R. Gish '00 M'04	David J. & Ann H. White	
William F. '97 & Tamara L. Goad		
Brent R. & Nancy Grafe	org donors 0809 cnhp	
Robert E. & Judith A. Griffin	NAME	
Mellisa A. Hall	Posey County Community Foundation	
Cary L. & Vicki L. Hanni	Wilkie Structural Engineering, Inc.	
Dean A. '91 & Laura M. '94 Happe		
Charles E. & Gale '93 Hoehn		
Jerome A. & June M. Hubert		
Jane E. Jackson '86		
Thomas P. & Janet R. Kilbane		
Donald B. & Jean Ogle Korb		
Chad M. '01 & Jennifer L. '02 Lampert		
John M. Lawrence '73		
Jeffrey O. Lewis & Paula Schmidt-Lewis		
Keith South & Aimee J. Luebben		

Help strengthen the College of Nursing and Health Professions

Your gift to the College of Nursing and Health Professions strengthens programs and provides support for students and faculty.

(You may choose more than one.)

- Center for Healthy Aging and Wellness
- College of Nursing and Health Professions (where the need is greatest)
- Dental Assisting/Dental Hygiene programs
- Food and Nutrition program
- Nursing programs
- Health Services/Administration programs
- Occupational Therapy programs
- Radiologic Technology/Diagnostic Medical Sonography programs
- Respiratory Therapy program
- Nursing Alumni Scholarship
- Other (Specify _____)

Amount: \$ _____

Method of Payment:

- Check enclosed
- Bill me in _____. (Specify month.)
- www.usi.edu/onlinegiving
- Enclosed is my matching gift form
- Charge to my credit card
 - Visa
 - MasterCard
 - Discover

Cardholder Name _____

Card Number _____

Exp. Date _____

Signature _____

Name _____

Address _____

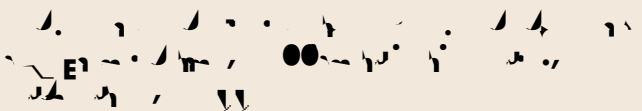
City, State, Zip _____

Telephone _____ Email _____

- Contact me about an estate gift.

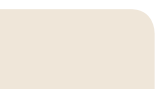
A contribution of \$25 or more to any USI Foundation fund makes graduates "active" members of the USI Alumni Association.

Clip form and mail in envelope



* 1 1 1 1

To learn more, visit www.usi.edu/giving.

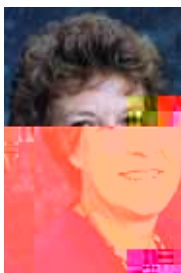


Maria Shirey named fellow in American Academy of Nursing



a ad , a a a a m
 ad a a mm a a -
 a ad a am a d
 a a ad a ma ad
 a d a d d da m
 a d m m.
 a m a d a a
 ma a a d a ad
 a a ma a d m a am
 ma a a - d am
 a d ma a a ma a
 a dd - a am ma a
 ad d d
 da d ad a a a
 ad ad a ma a a m a
 ad a d a d a a
 d a a ad a
 a a a a a a a
 ad a m m a a a
 a am & a a a
 a - ad d a d ma
 a a ad d a a a
 a a ad d a ad a d am d
 a a d a m a a a
 a a am d a d a mad a -
 a am m a a d
 a a d a

a a ad m a -
 m a ad m
 a a am ad d d
 m d a a a a m a d
 a ad m a d a - m m
 mm a d d m a a a d
 a a ad a a
 d a a am m d d a
 m a ad m a
 ad d a ad a d a
 a a d d a ad a
 a d d d a a
 a a a d



Carol Hermes named ACHE fellow

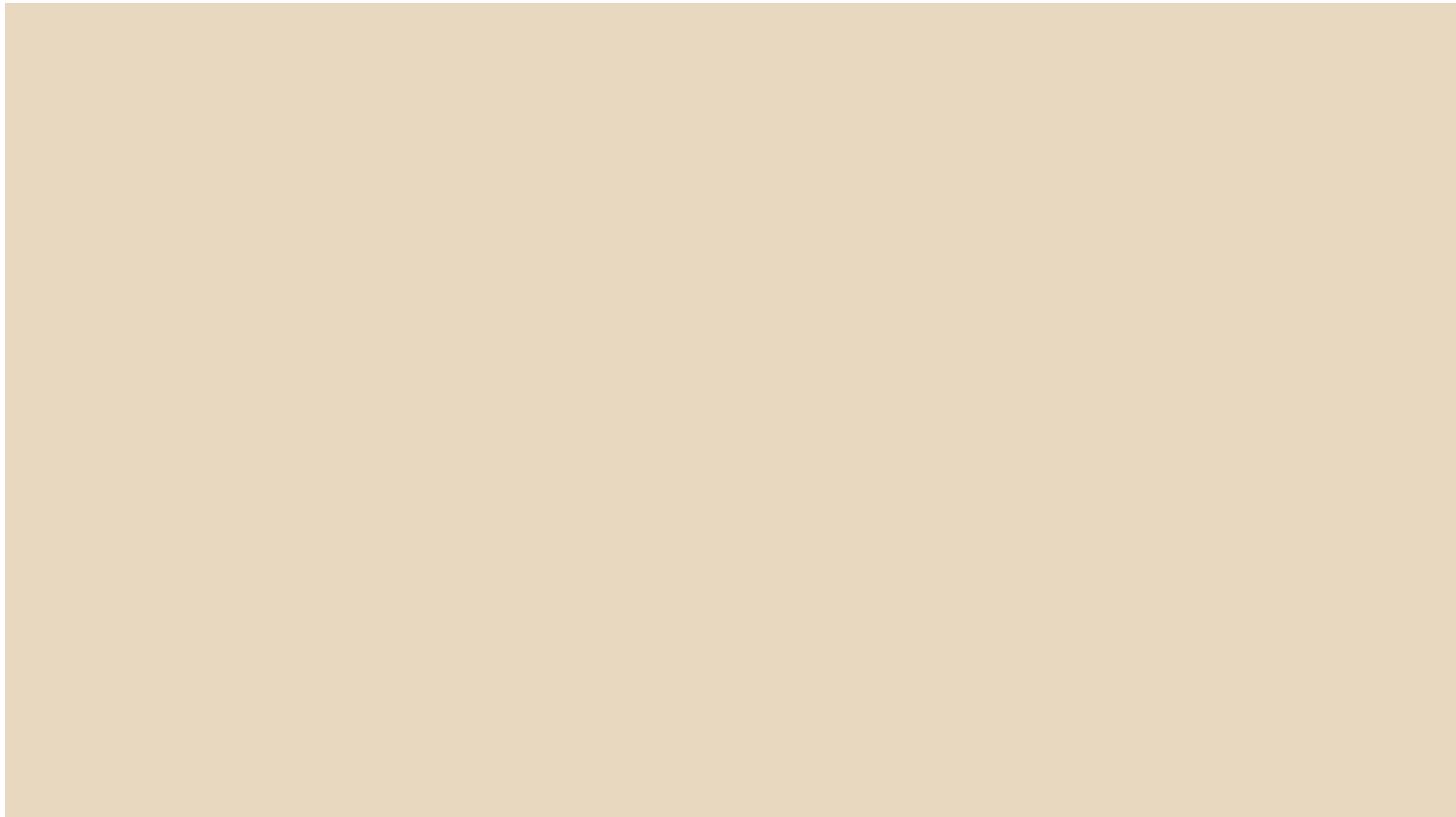
a m am d
 m a a
 adm a a m a
 m a a -
 a a ad
 a a a
 ad m d m a -
 a d
 a da d a
 d m a a a d d
 d a a m d
 a d

Elkins, Melton design online program

a d j a
 a a
 d da d a a
 am a d d
 d G d
 da a m a -
 dm a am a
 a d (d G
 d a d -
 a d a d
 am d a d
 a a m

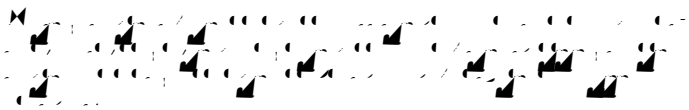
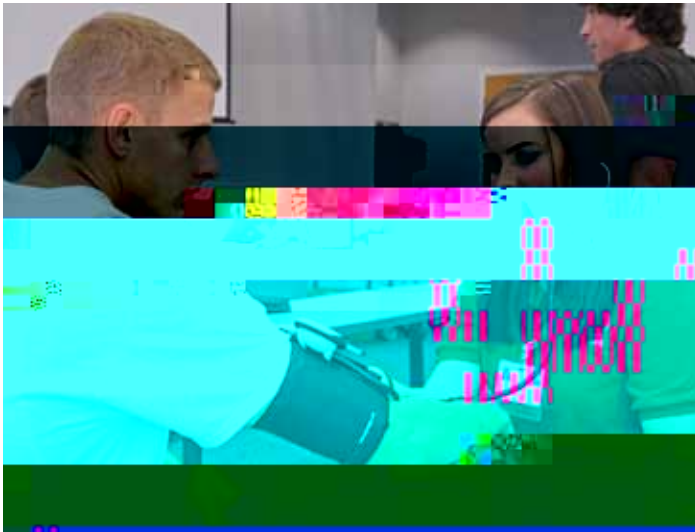


AROUND THE COLLEGE



“The college is a place where you can find your passion and pursue it with dedication and hard work. It’s a place where you can learn from the best and grow as a person. It’s a place where you can make a difference in the world.”

Nursing students assist with athletes' physicals



Peggy Hollis named USI Distinguished Nursing Alumna

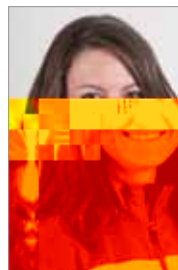


a d , a a a ' d, m ,
 a a a ' d a
 d m a a d d
 m
 a d d a a a a
 a d a a d a m
 d, m, a d
 a a a d d a '
 a a a a d a d

a a d a a d a d d
 m a m a a m d a am d
 a a d m a
 d a

d a d a m a d a a ' d
 a d a m a d am
 a d a a a d
 m

Food and nutrition major Ballinger garners Academic All-America honors



m ' a a d d
 - m a a a a am d J
 a a
 ma m a ad m -
 m a d am
 a d a
 a a d d am
 a ad m - m a d
 a d ma a a m a
 ad - a a m a -
 , d a a

Sigma Phi Omega holds induction

d d d a ma
 m a a m d d da a
 d- m a
 ma m a () a a a a ad m a d
 a a a d a
 m d a d d a a
 a m d d ad a d d
 a d a a d , a d a a a ad a d
 a
 a ma , a a a d d
 a a a , a a d a
 a m a
 d a a d ma , a m a
 J a a
 a m a
 a d d a a a m
 a a a d a a
 a a a d a a a d
 a a a d a d am

College wins award for collaboration

a d a a d
 a a ad m da a a a a
 a a a a
 a a a a
 a d a a ad a a ,
 a mm d d d a - a a
 d d - a d a d a d
 a a a a
 m a a a ad a d J a a a
 da a a a da a

Dietetics program moving forward

d a d a d a d a m m a d
ad a d a d a a d a d a
am -d a ma
d a a a d d a d d a d-
a d d a m m d a a a a d a
a d d a d a a a a a d m
ad a m a a d a am
d d m m a , - d a
am a a a a am
- d a d d a d a , a



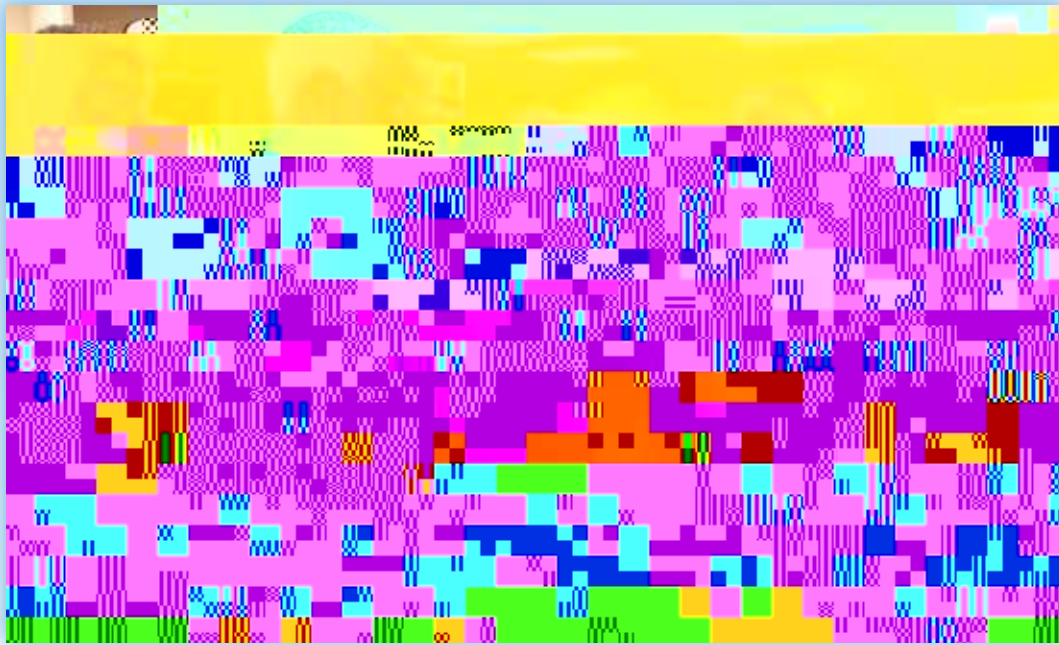
mm a , G , a d m a a a



Jeanne Dewig Mesker ' , d a , a d a d
m d a a a a

Betty Brown ' a a ' a d a a
a a a a (a a) a ' ad a
a a a a d a a a a
a a a a , d a a
a a a a d a a
a a a a a a ' d a a
a a a a a a a a d a a
a a a a a a m m a d a d
a a a a a d a
m a a d m

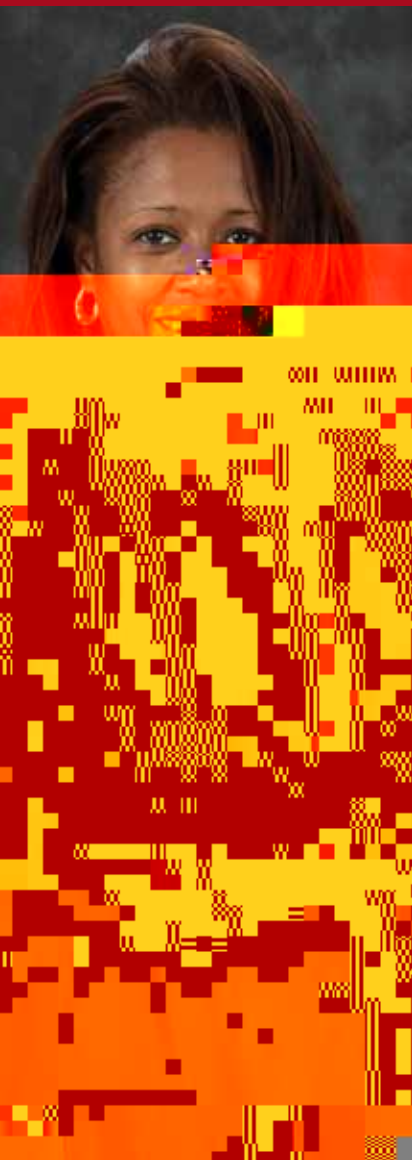
Hands-on activities promote careers in healthcare



10- 01

**College of Nursing
and Health Professions**
University of Southern Indiana
8600 University Boulevard
Evansville, Indiana 47 12

Nursing and Health Professions Continuing Education



Workshops and Conferences

a ad a a , a
a a ad
a a ad a a
da da mm a,
a a a a m a
a da da m m, a
m a m mJ

2010-11 Certificate Programs (Internet-delivered instruction)

m' a a a m , a , m
a a a da , d d d
a a a a a m , J a a , a , a J
a a a m ,
a m a , a m
a a a m , a
a m ad a am, J a a , m m
a a J a a , m
a a m J a a , a
d a a m , J a a , m
a a m , a
a a a m , J a a ,
a a a m a m
a m a , a m
d a a m , m

Customized programs

ad a a am m d a a
a ad am ma
a d a -
Ga a d a
a a am