


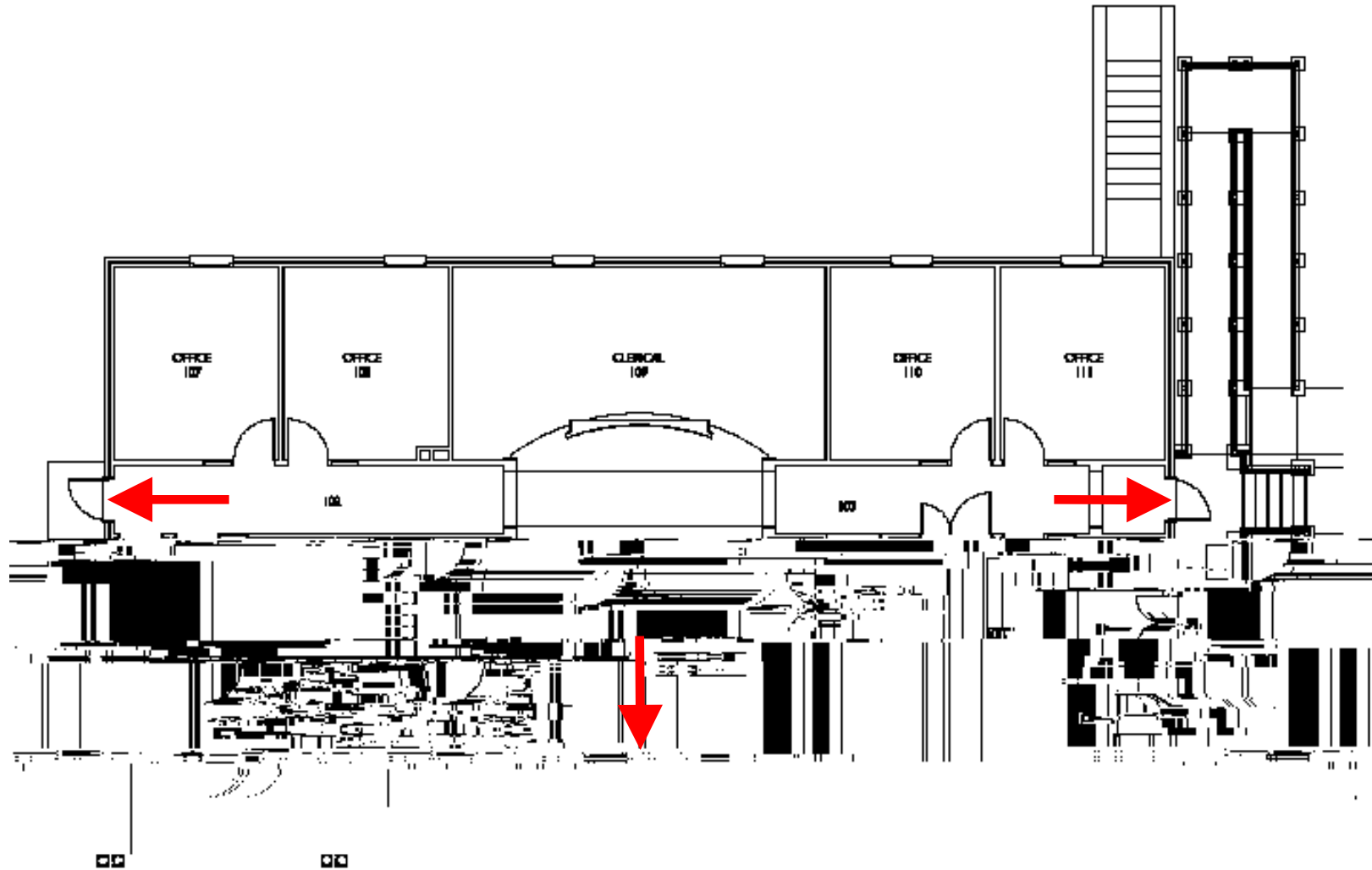


**USI Foundation
First Level**

-  Primary Exit
-  Evacuation Area
-  Severe Weather Gathering Area



IN THE EVENT OF IMMEDIATE SEVERE WEATHER, PROCEED TO THE DESIGNATED "SEVERE WEATHER GATHERING AREA" IN THE LOWER LEVEL OF THE USI FOUNDATION.